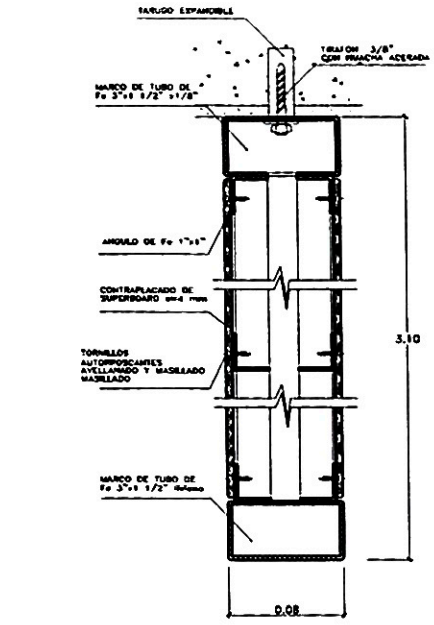
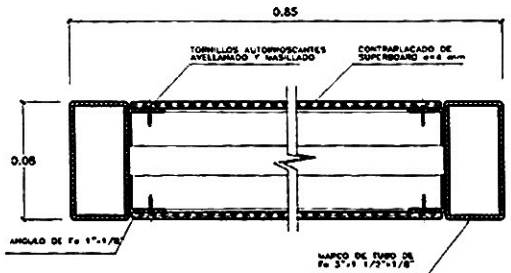


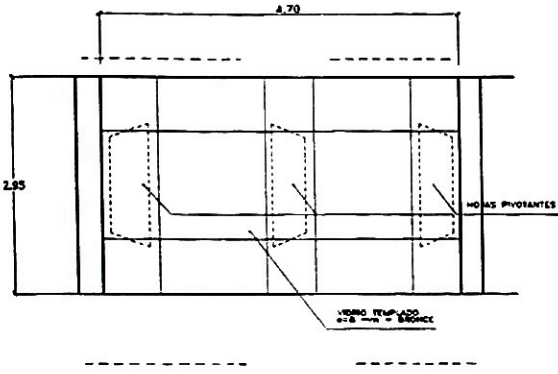
CORTE DETALLE DE PARASOL VERTICAL
ESCALA: 1/20



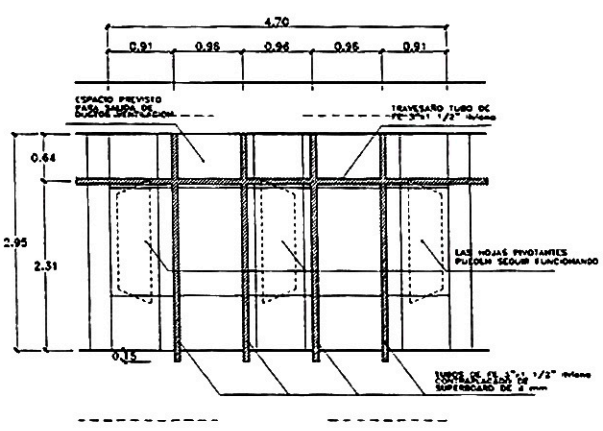
DETALLE 2 PARASOL VERTICAL
ESCALA: 1/2.5



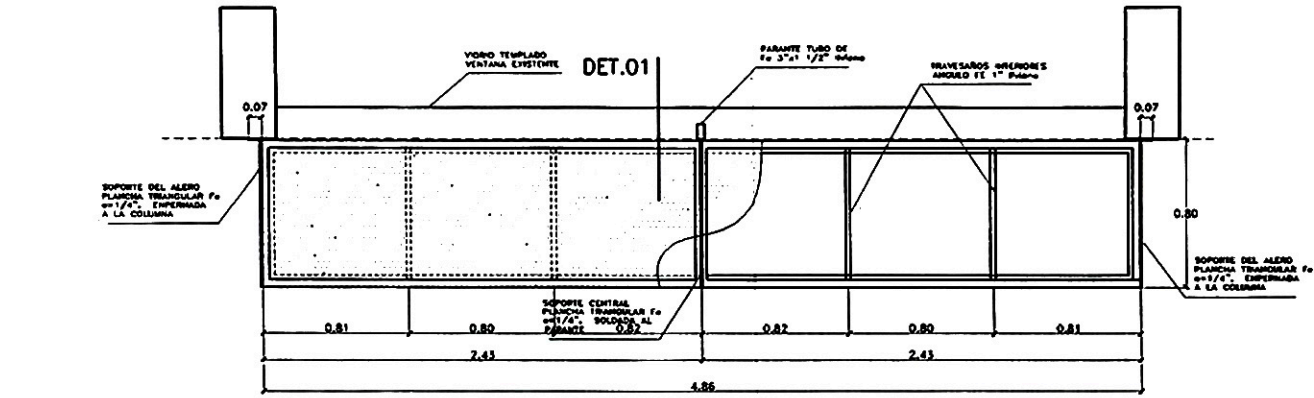
DETALLE 1 PARASOL VERTICAL
ESCALA: 1/2.5



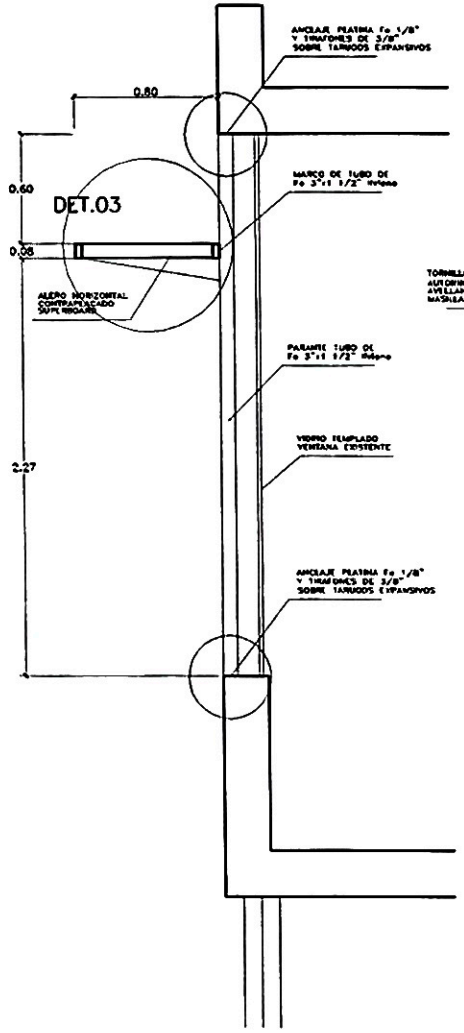
ELEVACION VENTANA TIPICA EXISTENTE
ESCALA: 1/50



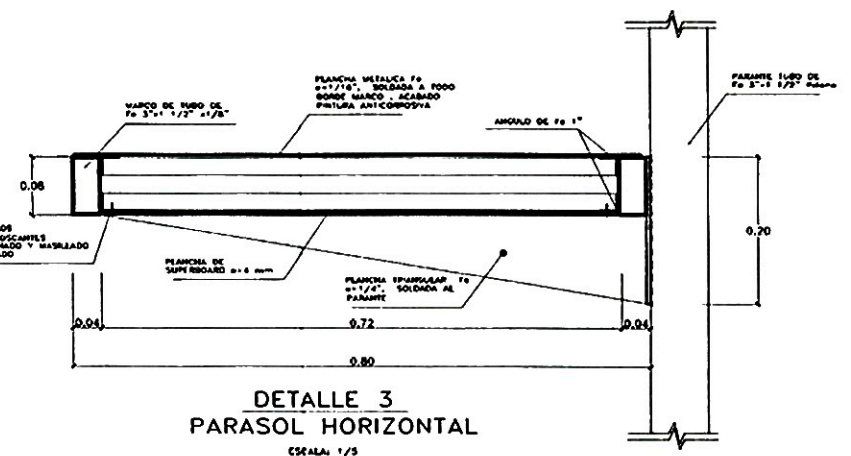
ELEVACION PARASOL VERTICAL ADOSADO A VENTANA EXISTENTE
ESCALA: 1/50



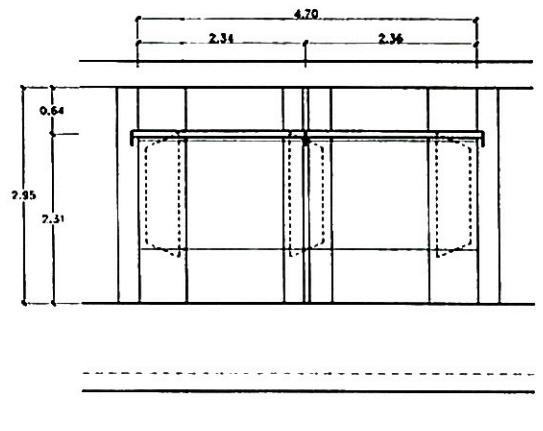
PLANTA DE PARASOL HORIZONTAL ADOSADO A VENTANA EXISTENTE
ESCALA: 1/20



CORTE DETALLE DE PARASOL HORIZONTAL
ESCALA: 1/20



DETALLE 3 PARASOL HORIZONTAL
ESCALA: 1/5



ELEVACION PARASOL HORIZONTAL ADOSADO A VENTANA EXISTENTE
ESCALA: 1/50



FACULTAD DE ARQUITECTURA URBANISMO Y ARTE

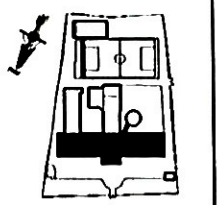
TAC - 2004

PROYECTO
REMODELACION DE LAS UNIDADES DE ATENCION PARA PACIENTES AMBULATORIOS DEL HOGAR CLINICA SAN JUAN DE DIOS - LIMA

UBICACION
Av. Nicolas Arriola N°3250
Distrito: San Luis
Provincia y Depart.: Lima

SOLICITANTE
BACH. ARO. RAUL DIONICIO BOTTOM ALVAREZ
CODIGO: 800635A
ASESOR
Arqt. Hugo Romero Rodriguez

UNIDADES
PABELLON PRINC. HOGAR CLINICA S.J.D.



PLANO
DETALLE DE PARASOLES

ESCALA
1:50, 1:20
1:5, 1:2.5

FECHA
JUL 2004

LAMINA
A-18